

Louisiana All-State Ensemble Audition Scales



Bb Trumpet

Courtesy of the Hurley School of Music
at Centenary College

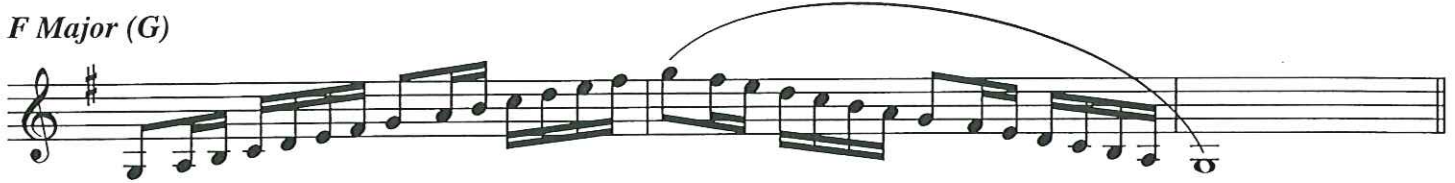
CENTENARY
COLLEGE

C Major (D)

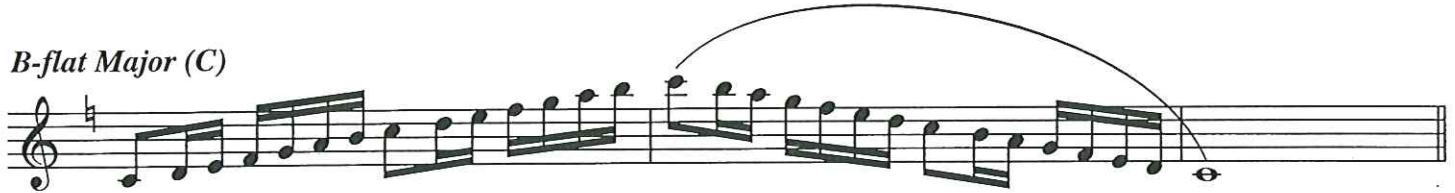
(♩ = 72)



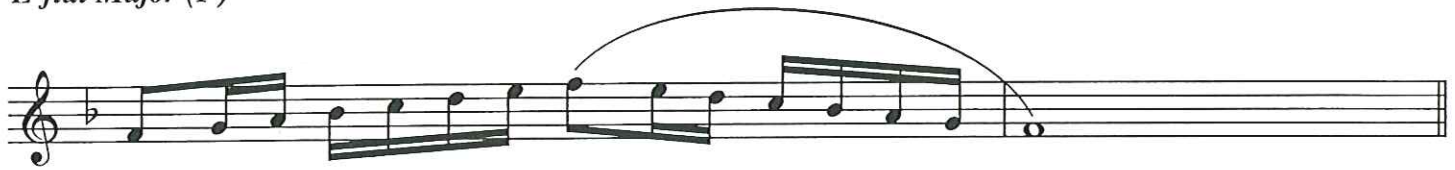
F Major (G)



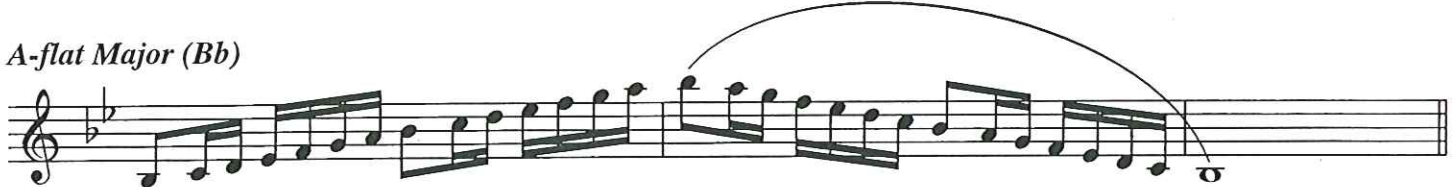
B-flat Major (C)



E-flat Major (F)



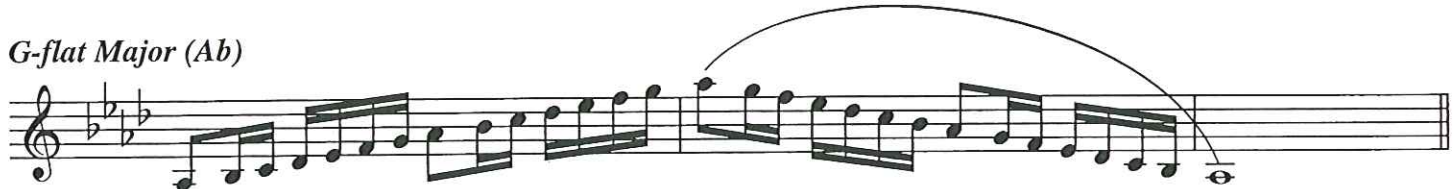
A-flat Major (Bb)



D-flat Major (E)



G-flat Major (Ab)



B Major (Db)



Bb Trumpet - 2

E Major (Gb)

Musical notation for the E Major (Gb) scale. The scale is written on a single staff in treble clef with a key signature of three flats (Bb, Eb, Ab). It consists of a sequence of eighth notes: E4, F4, G4, Ab4, Bb4, C5, D5, E5, followed by a descending sequence: D5, C5, Bb4, Ab4, G4, F4, E4. A slur covers the entire scale.

A Major (B)

Musical notation for the A Major (B) scale. The scale is written on a single staff in treble clef with a key signature of three sharps (F#, C#, G#). It consists of a sequence of eighth notes: A4, B4, C#5, D5, E5, F#5, G#5, A5, followed by a descending sequence: G#5, F#5, E5, D5, C#5, B4, A4. A slur covers the entire scale.

D Major (E)

Musical notation for the D Major (E) scale. The scale is written on a single staff in treble clef with a key signature of two sharps (F#, C#). It consists of a sequence of eighth notes: D4, E4, F#4, G#4, A4, B4, C#5, D5, followed by a descending sequence: C#5, B4, A4, G#4, F#4, E4, D4. A slur covers the entire scale.

G Major (A)

Musical notation for the G Major (A) scale. The scale is written on a single staff in treble clef with a key signature of one sharp (F#). It consists of a sequence of eighth notes: G4, A4, B4, C#5, D5, E5, F#5, G5, followed by a descending sequence: F#5, E5, D5, C#5, B4, A4, G4. A slur covers the entire scale.

Chromatic Scale

Musical notation for the ascending chromatic scale. The scale is written on a single staff in treble clef with a 2/4 time signature. It consists of a sequence of eighth notes: C4, C#4, D4, D#4, E4, E#4, F4, F#4, G4, G#4, A4, A#4, B4, B#4, C5.

Musical notation for the descending chromatic scale. The scale is written on a single staff in treble clef. It consists of a sequence of eighth notes: C5, B#4, B4, A#4, A4, G#4, G4, F#4, F4, E#4, E4, D#4, D4, C#4, C4.

Musical notation for the chromatic scale across an octave. The scale is written on a single staff in treble clef. It consists of a sequence of eighth notes: C4, C#4, D4, D#4, E4, E#4, F4, F#4, G4, G#4, A4, A#4, B4, B#4, C5, followed by a descending sequence: B4, A4, G4, F4, E4, D4, C4.